

PASSEXAM 問題集

更に上のクオリティ 更に上のサービス



1年で無料進級することに提供する
<http://www.passexam.jp>

Exam : **NS0-506**

Title : NetApp Certified
Implementation Engineer -
SAN, Clustered Data
ONTAP

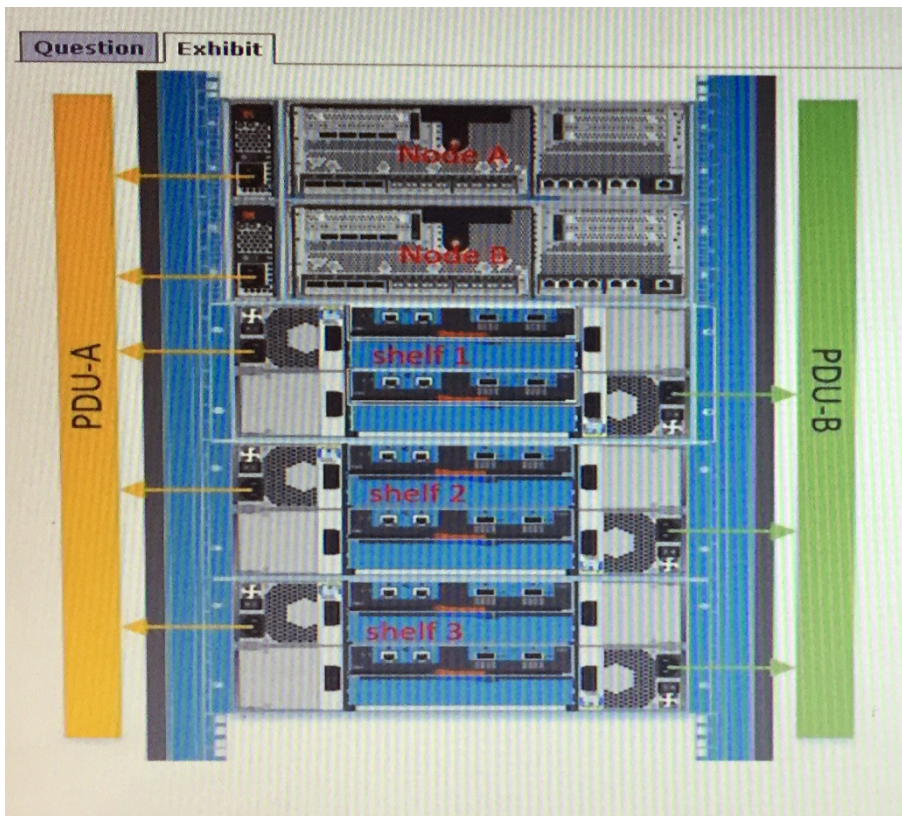
Version : DEMO

1. On a FAS8040, which port is used for FCoE connections?

- A. e0M
- B. e0P
- C. 0a
- D. e0h

Answer: D

2. Click the Exhibit button.



Referring to the diagram shown in the exhibit, what will happen if PDU-B fails?

- A. Both Node A and Node B will remain online and all disk shelves will remain online.
- B. Both Node A and Node B will remain online, but all disk shelves will immediately lose power and become inaccessible.
- C. Both Node A and Node B will immediately lose power and become inaccessible.
- D. Node A will immediately lose power and become inaccessible. Node B will remain online.

Answer: A

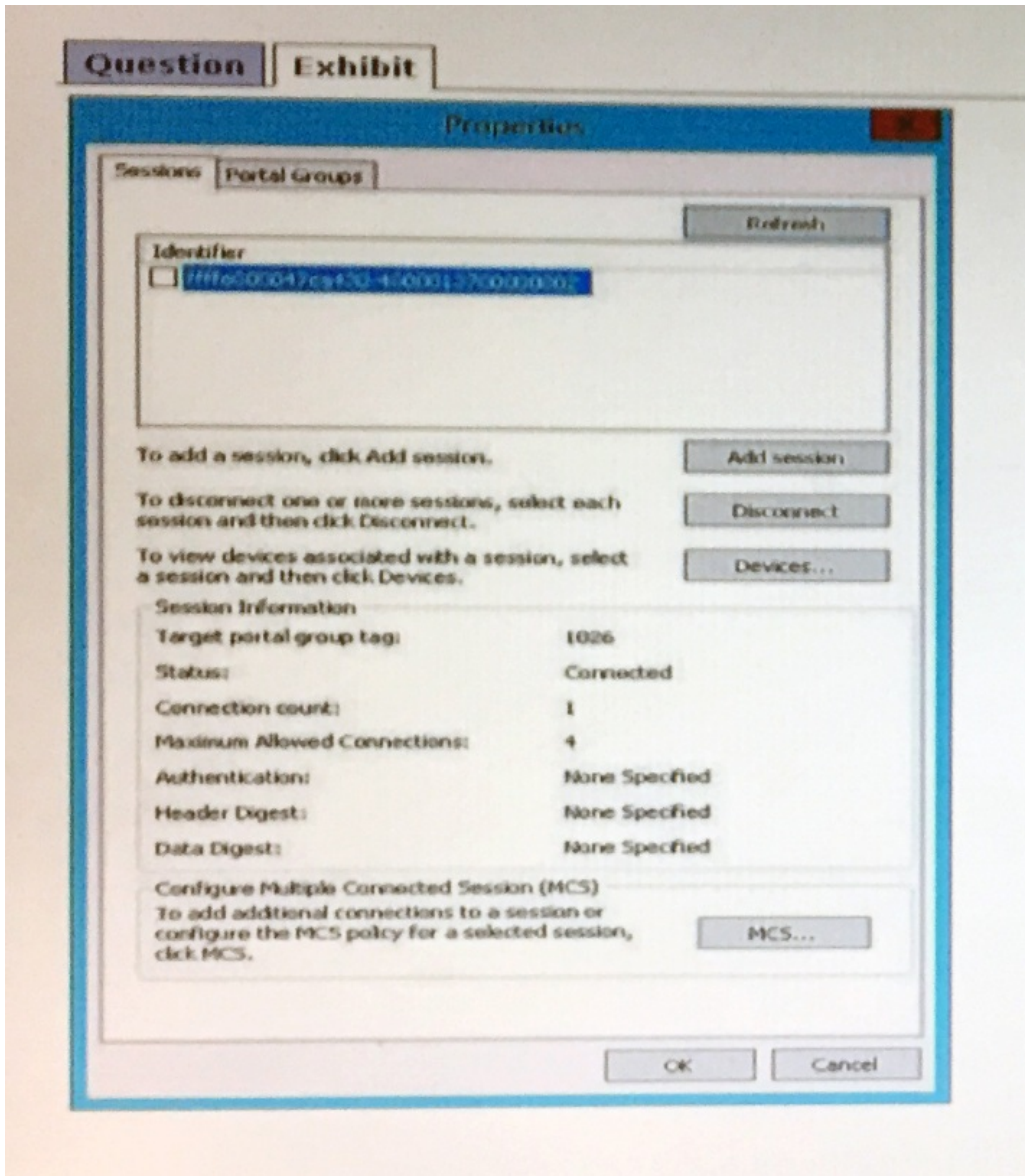
3. Hosts and switches are connected to a FAS8040. Multiple FC-enabled SVMs have been created, and LUNs have been mapped to multiple hosts. During failover testing, one of the hosts lost connectivity to its LUNs.

What needs to be examined?

- A. FAS8040 ALUA configuration
- B. host multipath settings
- C. xhost iSCSI timeout values
- D. switch NPIV settings

Answer: A

4. Click the Exhibit button.



Based on the exhibit, you are configuring a 4-node cluster with an iSCSI LIF on each node. You connect using the first LIF from a Windows Server 2012 host.

How would you add the other three LIFs?

- A. Use the MCS button.
- B. Use the Devices button.
- C. Use the Add session button.
- D. Wait and then press the Refresh button until the other sessions appear.

Answer: C

5. You have a 4-node FAS8040 cluster licensed for FCP and iSCSI. Each node has both FC and iSCSI LIFs. One of your Windows 2012 Servers has a single 8Gb FC port and a single 10 Gb Ethernet port with switched connectivity to the FC and Ethernet ports on the cluster. You need to use both ports on the host

for multipath access to a LUN on the NetApp cluster.

What will accomplish this task?

- A. NetApp Data ONTAP DSM for Windows MPIO
- B. FCoE HBA
- C. iSCSI HBA
- D. native Windows MPIO

Answer: A