

PASSEXAM 問題集

更に上のクオリティ 更に上のサービス



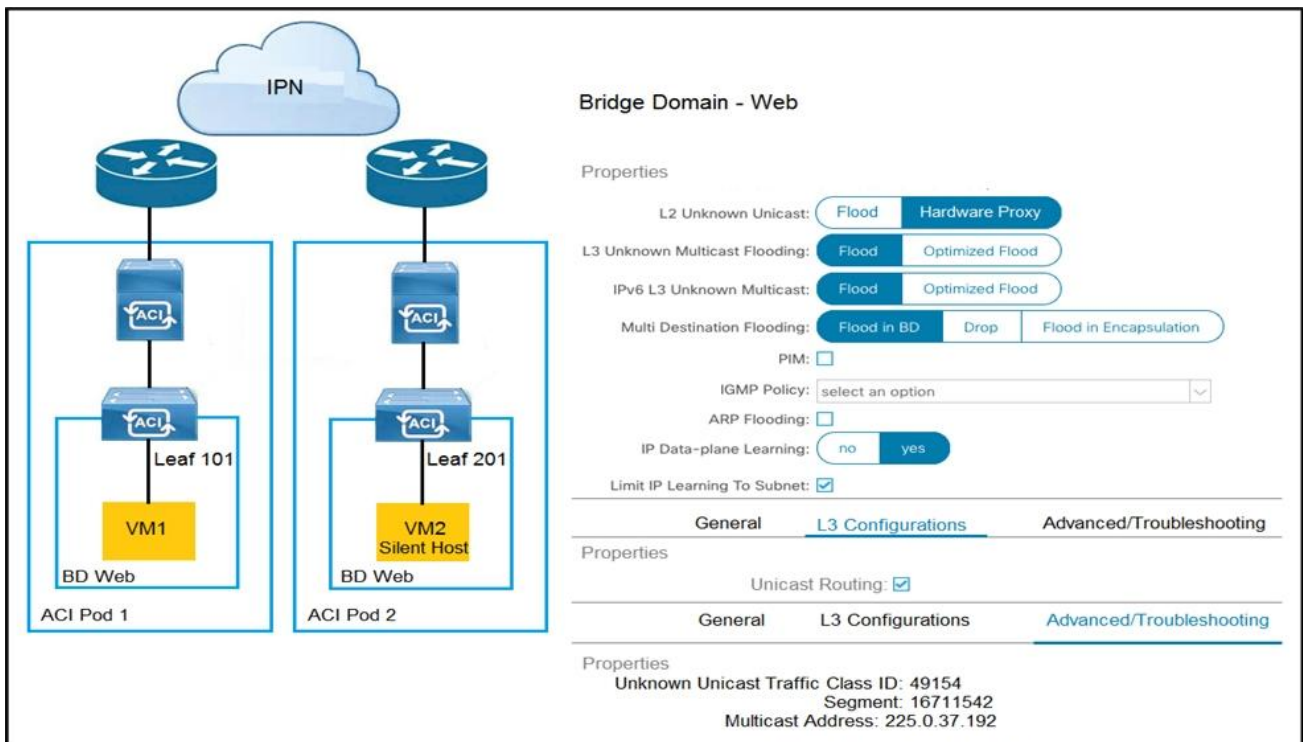
1年で無料進級することに提供する
<http://www.passexam.jp>

Exam : **600-660**

Title : Implementing Cisco
Application Centric
Infrastructure - Advanced
(DCACIA)

Version : DEMO

1.Refer to the exhibit.



How is the ARP request from VM1 forwarded when VM2 is not learned in the Cisco ACI fabric?

- A. Leaf 101 forwards the ARP request to one of the proxy VTEP spines.
- B. POD1 spine responds to the ARP request after the POD1 COOP is updated with the VM2 location.
- C. Leaf 101 encapsulates the ARP request into a multicast packet that is destined to 225.0.37.192.
- D. Leaf 101 switch consumes the ARP reply of VM2 to update the local endpoint table.

Answer: A

2.Which approach does Cisco ACI use to achieve multidestination packet forwarding between leaf switches in the same fabric?

- A. Map VXLAN VTEP to the multicast group
- B. Map VXLAN to PIM-SM protocol
- C. Map VXLAN VNI to the multicast group
- D. Map VXLAN to PIM-DM protocol

Answer: C

3.What does the VXLAN source port add to the overlay packet forwarding when it uses the hash of Layer 2, Layer 3, and Layer 4 headers of the inner packet?

- A. ECMP
- B. TCP optimization
- C. disabled fragmentation
- D. jumbo frames

Answer: A

Explanation:

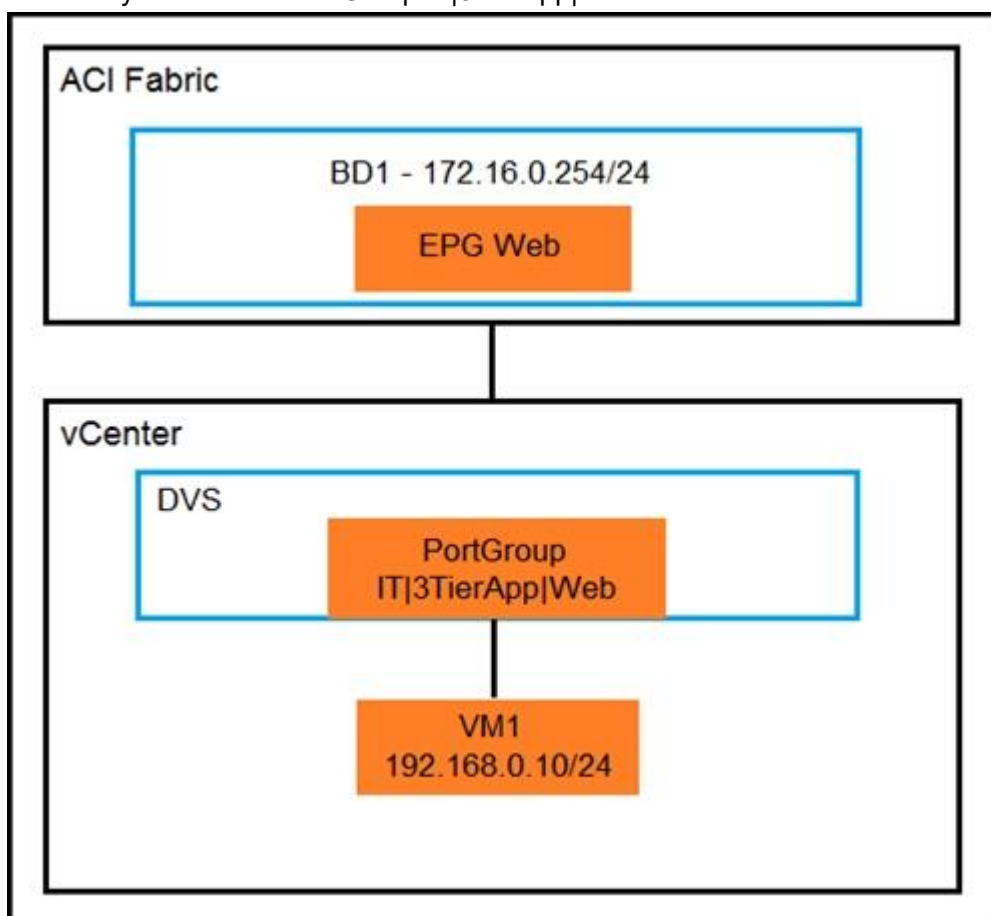
Reference: <https://www.cisco.com/c/en/us/support/docs/lan-switching/vlan/212682-virtual-extensible-lan-and-ethernet-virt.html>

4. Which two actions are the Cisco best practices to configure NIC teaming load balancing for Cisco UCS B-Series blades that are connected to the Cisco ACI leaf switches? (Choose two.)

- A. Create vPC+
- B. Enable LACP active mode
- C. Create PAgP
- D. Create vPC
- E. Enable MAC pinning

Answer: BE

5. An organization migrates its virtualized servers from a legacy environment to Cisco ACI. VM1 is incorrectly attached to PortGroup IT|3TierApp|Web.



Which action limits IP address learning in BD1?

- A. Enable Enforce Subnet Check
- B. Enable Rouge Endpoint Control
- C. Enable GARP-based EP Move Detection Mode
- D. Disable Remote EP Learn

Answer: C